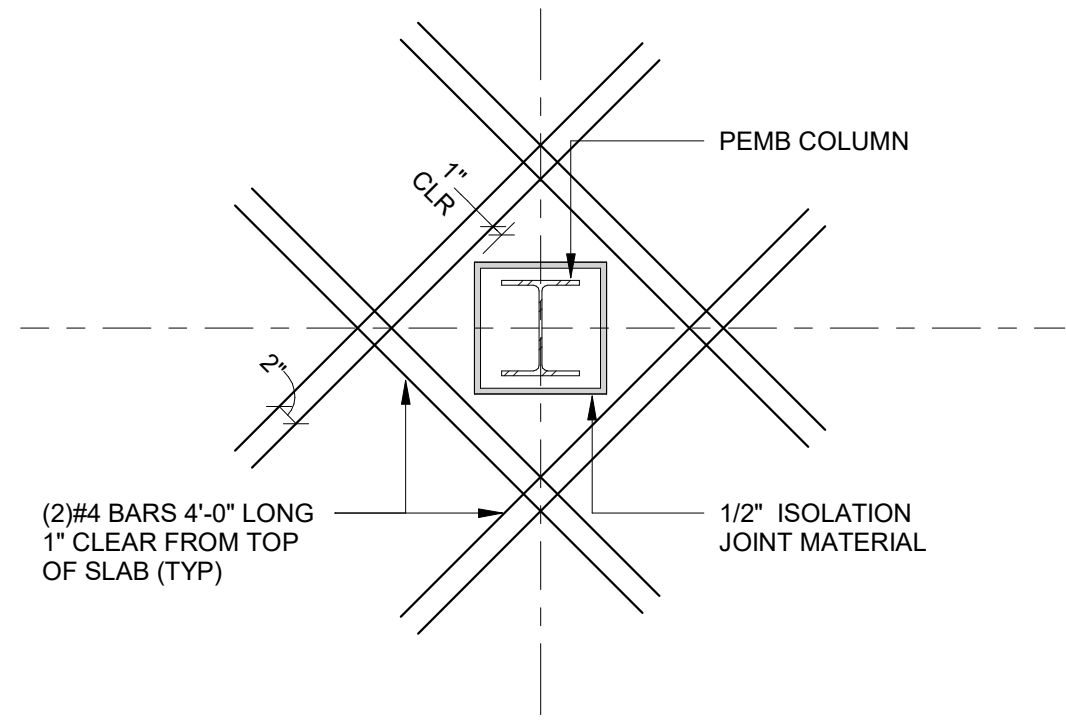
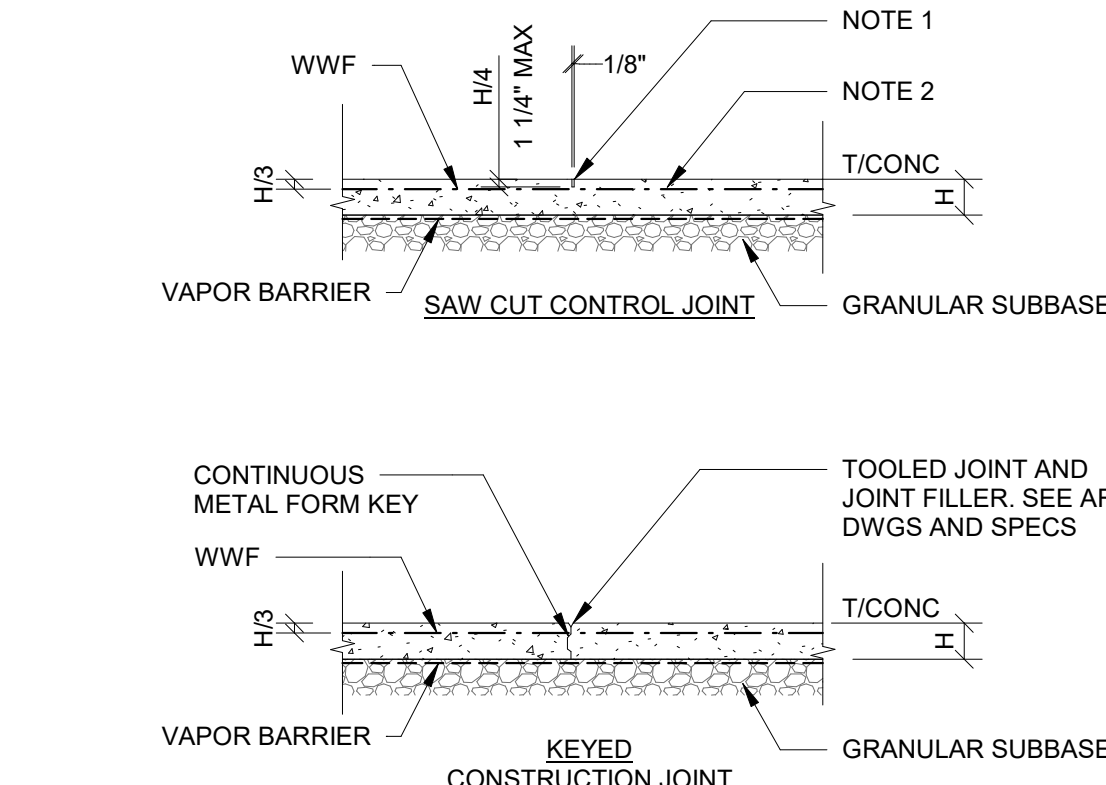


12 TYPICAL REINFORCEMENT AT SLAB RE-ENTRANT CORNER  
3/4" = 1'-0"

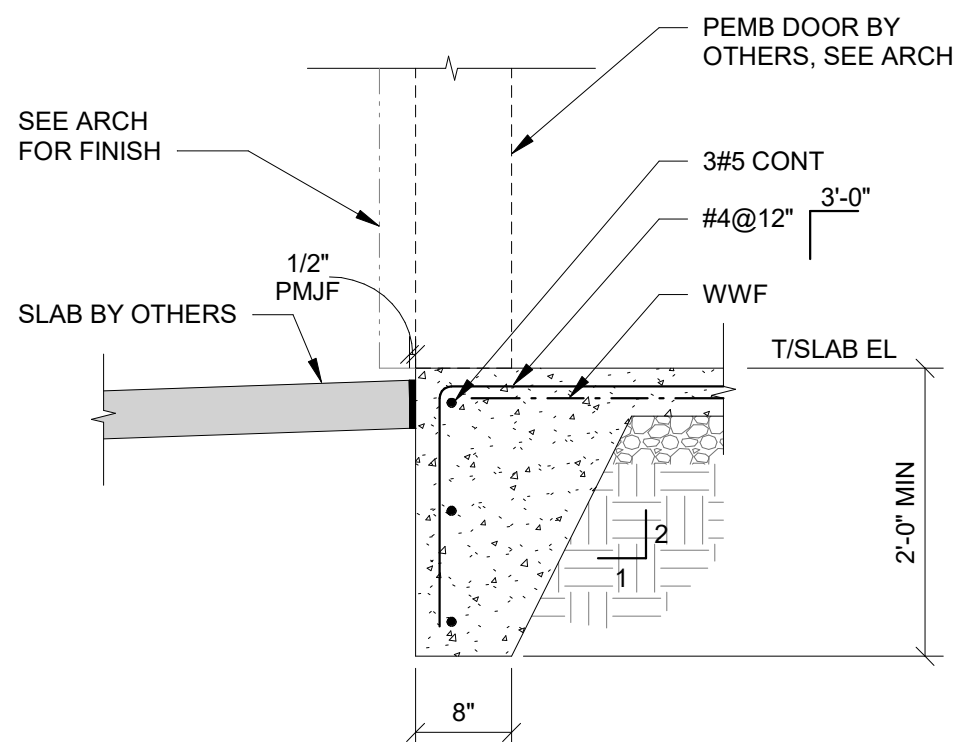


8 COLUMN ISOLATION JOINT NOT AT SLAB JOINT  
3/4" = 1'-0"

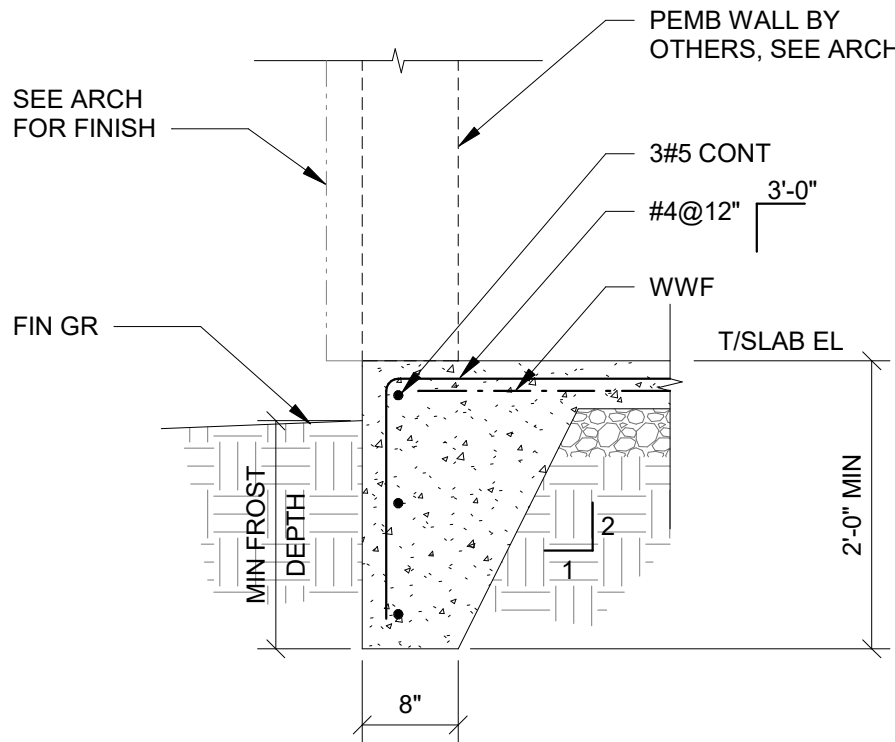


NOTE:  
1. SAW CUT SHALL BE MADE SOON ENOUGH TO PREVENT CRACKING, BUT NOT SO SOON AS TO CAUSE SPALLING OF THE CONCRETE WHILE SAWING. FOR JOINT FILLER, SEE ARCHITECTURAL DRAWINGS AND SPECIFICATIONS. FOR JOINT SPACING, SEE STRUCTURAL SPECIFICATIONS.  
2. SAW CUT OR DISCONTINUE REINF AT CONSTRUCTION JT.  
3. KEYED CONSTRUCTION JOINTS NEED ONLY OCCUR AT EXPOSED EDGES DURING POURING.  
4. WHERE REQUIRED FOR SUCCESSFUL INSTALLATION OF FLOOR FINISH SLAB SHALL BE WET CURED AND BE PLACED A MINIMUM OF 90 DAYS PRIOR TO INSTALLATION OF FLOOR FINISHES. AT CONTRACTOR'S OPTION DIAMOND DOWELS MAY BE USED IN LIEU OF CONTINUOUS CONCRETE KEY AT KEYED JOINT.  
5. PROVIDE SLAB BOLSTERS A MAX 2'-0" APART FOR WWF SUPPORT

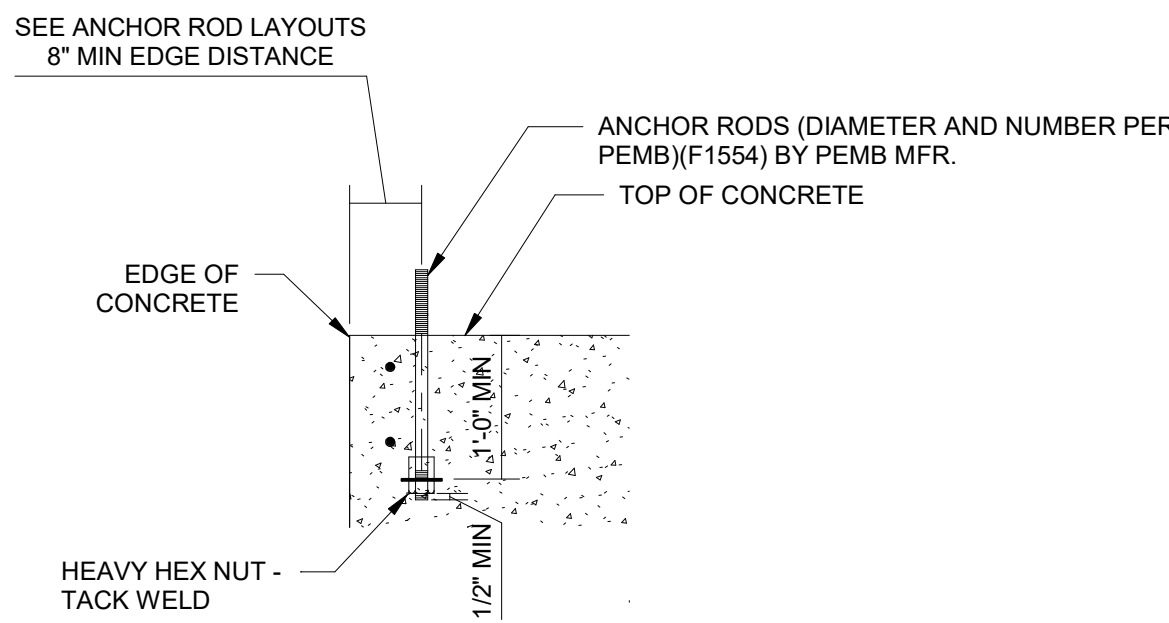
4 TYPICAL GRADE SUPPORTED SLAB AT JOINTS  
3/4" = 1'-0"



7 TURNDOWN SLAB AT DOOR  
3/4" = 1'-0"



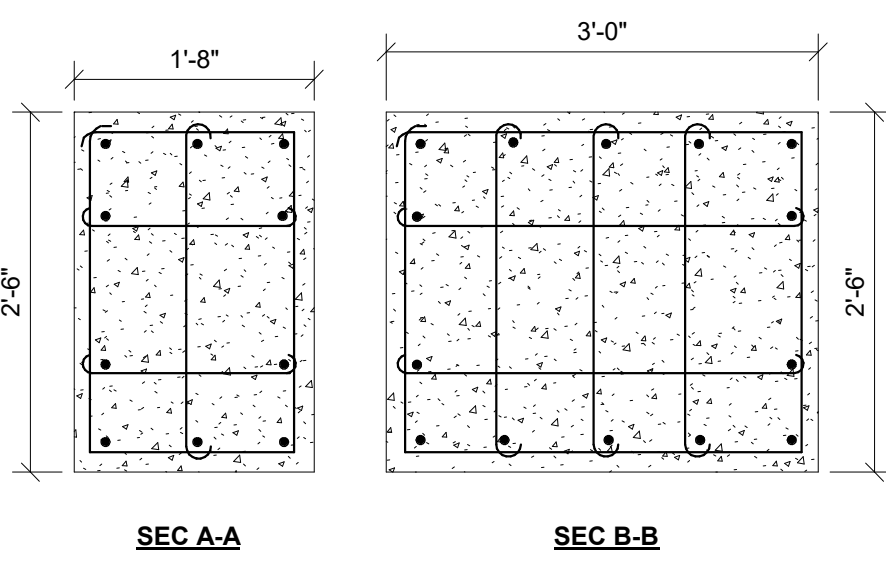
3 TYPICAL TURNDOWN SLAB  
3/4" = 1'-0"



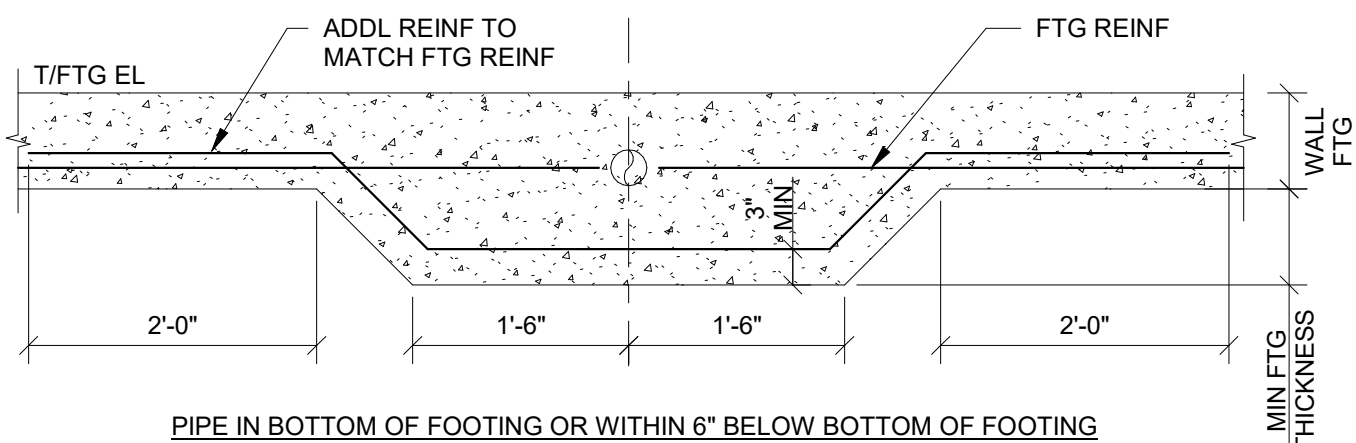
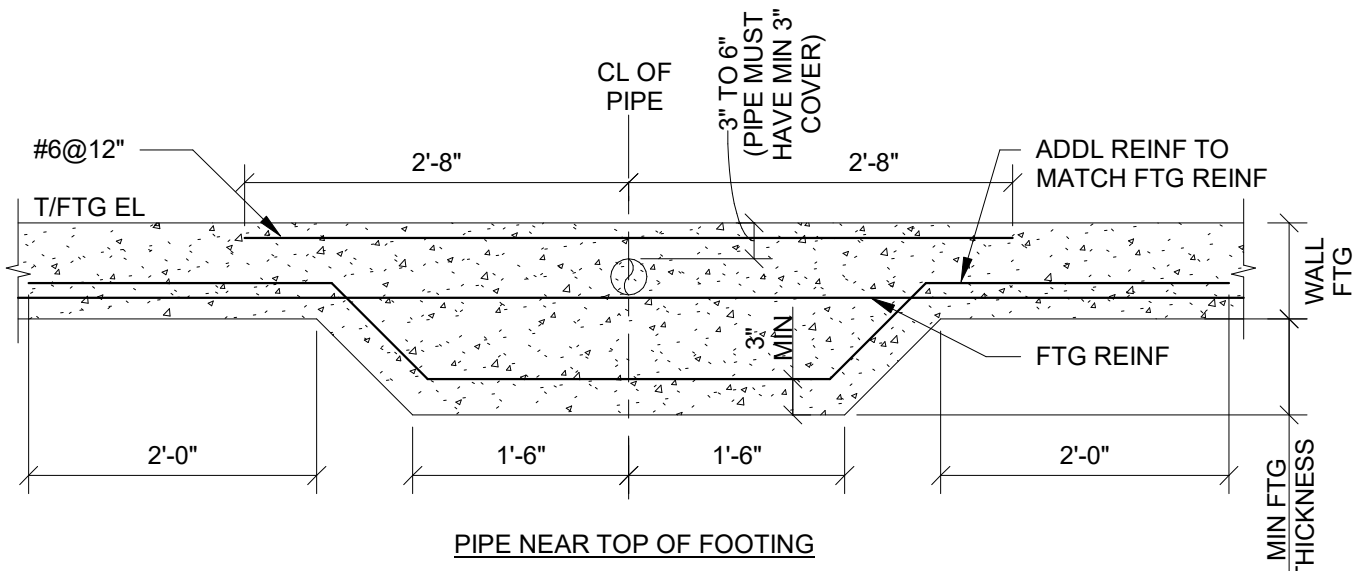
NOTES:  
1. SIZES AND DIMENSIONS SHOWN ARE MINIMUMS. EXACT SIZE AND LOCATIONS OF ANCHOR RODS TO BE DETERMINED BY PEMB MFR.  
2. CONTRACTOR TO COORDINATE ROD EXTENSIONS AND THREADED LENGTHS.  
3. COORDINATE PIER LOCATION TO ACHIEVE MINIMUM ANCHOR EDGE DISTANCE.

6 STEEL COLUMN ANCHOR RODS  
3/4" = 1'-0"

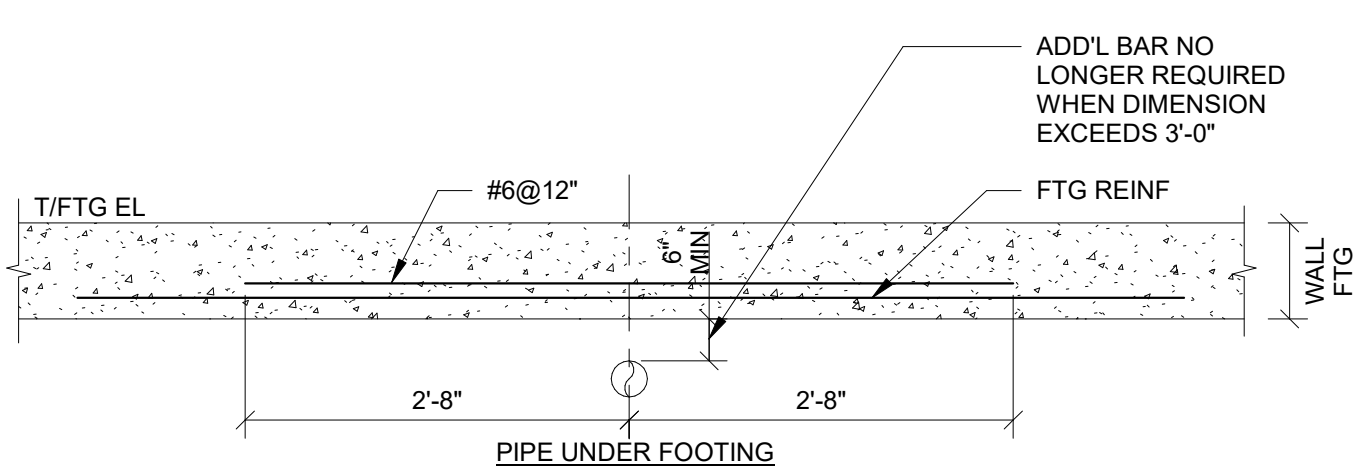
| PEDESTAL SCHEDULE |               |               |        |                 |
|-------------------|---------------|---------------|--------|-----------------|
| MARK              | SIZE (WxD)    | REINFORCEMENT |        | REMARKS         |
|                   |               | VERTICAL      | TIES   |                 |
| P1                | 1'-6" x 2'-6" | (10) - #6     | #3@12" | SEE SECTION A-A |
| P2                | 3'-0" x 2'-6" | (14) - #8     | #3@12" | SEE SECTION B-B |



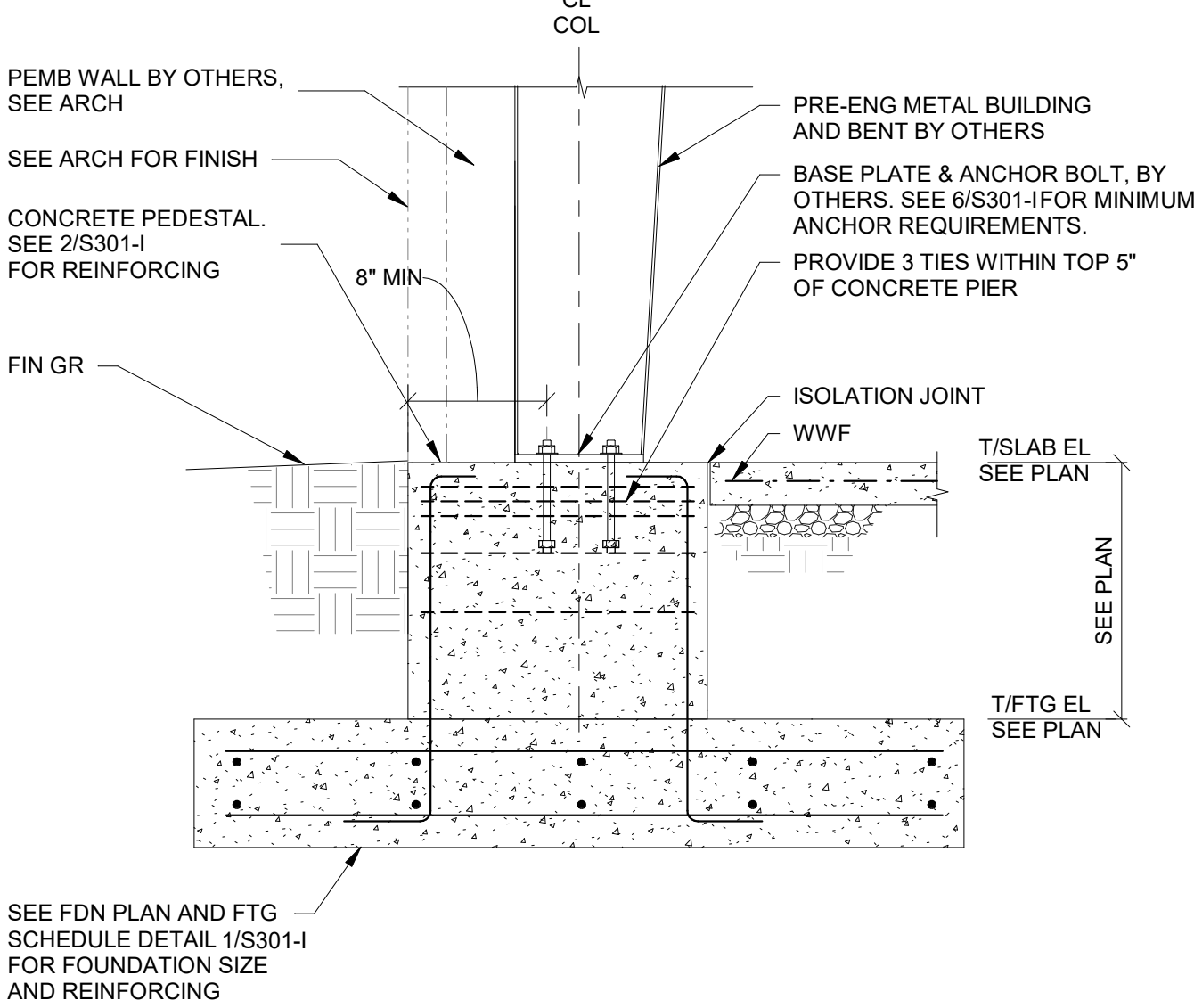
2 PEDESTAL SCHEDULE  
12" = 1'-0"



13 TYPICAL THICKENED FOOTING AT UNDERGROUND PIPING  
3/4" = 1'-0"



NOTES:  
1. NO PIPES TO PASS IN OR BENEATH COLUMN FOOTINGS.  
2. PIPES SHALL NOT EXCEED 1/3 THE FOOTING THICKNESS AFTER IT HAS BEEN INCREASED.  
3. VERIFY PIPE PENETRATION LOCATIONS W/ PLUMBING CONTRACTOR.



5 EXTERIOR FOOTING AT PRE-ENGINEERED METAL BUILDING  
3/4" = 1'-0"

| FOOTING SCHEDULE |                 |        |              |
|------------------|-----------------|--------|--------------|
| MARK             | SIZE (WxLxT)    | REINF  | REMARKS      |
| F3.0             | 3'-0"x3'-0"x12" | 4#4 EW | TOP & BOTTOM |
| F6.5             | 6'-6"x6'-6"x13" | 7#5 EW | TOP & BOTTOM |
| F7.5             | 7'-6"x7'-6"x15" | 7#6 EW | TOP & BOTTOM |

1 FOOTING SCHEDULE  
3/4" = 1'-0"



Copyright (c) 2026 Praxis3, LLC  
All reports, plans, specifications, computer files, field data, notes and other documents and instruments prepared by Praxis3 shall retain all copyright law, statutory and other reserved rights, including copyright therein.  
This drawing may not be reproduced in whole or in part without written permission of Praxis3. It is to be returned upon request. Copies or labels are void on this original drawing.

| Rev | Date     | Comments         |
|-----|----------|------------------|
|     | 05/22/26 | Permit & Bid Set |

Client:

Fannin County

370 Tom Boyd Road  
Blue Ridge, Georgia 30513

Project Number: 24184  
Project Name:

FANNIN COUNTY  
REC CENTER -  
PHASE I

580 Winding Drive  
Blue Ridge, Georgia 30513

Key Plan:

Sheet Title:

FOUNDATION  
DETAILS

Sheet Number:

S301-I